



BSB 4050

EN / 2-in-1 Baby scale ■ User's manual



Table of Contents

FOREWORD.....	4
PRODUCT OVERVIEW	4
IMPORTANT INFORMATION FOR SAFE USE	5
INCLUDED CONTENTS.....	7
DESCRIPTION OF THE SCALE	7
INSERTING BATTERIES	8
Indication of low battery voltage	8
ASSEMBLING AND ATTACHING THE TRAY.....	8
WEIGHING	9
Turning on the scale	9
Changing the weight units	9
Weighing with the tray	9
Weighing without the tray	9
Weighing with the subtractive tare function.....	10
Weighing with the hold function.....	10
Turning off the scale	10
ERROR MESSAGES.....	10
CLEANING AND MAINTENANCE	10
STORAGE	11
TECHNICAL SPECIFICATIONS.....	11
DISPOSAL OF USED BATTERIES.....	11
INSTRUCTIONS AND INFORMATION REGARDING THE DISPOSAL OF USED PACKAGING MATERIALS.....	11
EXPLANATION OF SYMBOLS USED ON THE PRODUCT, ITS ACCESSORIES AND PACKAGING.....	12

Foreword

- Thank you for selecting our quality digital scale BSB 4050 Bayby.
- Prior to first use, carefully read this user's manual and thoroughly acquaint yourself with the scale. Keep the user's manual for future reference.

Product overview

- This digital scale enables weighing of newborns, infants and small children both lying down and standing up.
- For weighing newborns and infants up to a weight of 10 kg, the scale has a tray that is easy to assemble, attach and remove. Without using the tray, it is then possible to weight heavier infants and children from 1 to 10 years of age up to a weight of 40 kg on the scale's weighing platform.
- You do not even have to undress the child – the TARE function will subtract the weight of the baby blanket, towel, etc. from the final weight. If your child is particularly lively, you will appreciate the HOLD function – blocking of the scale. It will enable you to weigh your child accurately even while the child is moving.
- You have several weight units available – kg, oz or lb.

Important information for safe use



Attention:

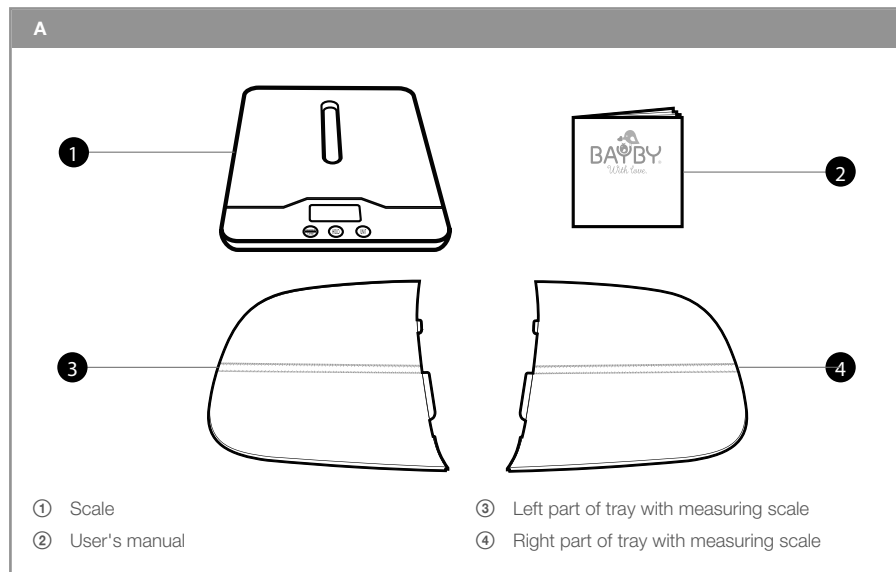
This scale meets all relevant standards and its use is safe when all the instructions contained in this manual are followed. Always think of the safety of your child when weighing it.

- This scale is intended only for private use at home. It is not intended for commercial purposes.
- After unpacking the scale and its accessories from the packaging material, place the plastic bags in a safe location out of children's reach. In the presence of children, plastic bags may present a suffocation hazard.
- The scale may only be operated by adults. Children must not play with the scale. Keep the scale and its tray away from children.
- Never use the scale with accessories that are not approved by the manufacturer.
- Do not use the scale in an excessively dusty or humid environment. Do not subject it to extreme temperature changes and electromagnetic fields. Protect the scale against child wetting and liquid cosmetic products.
- Always locate the scale on an even rigid surface in places where there is no risk of it tipping over, at a sufficient distance from sources of heat (e.g. wood stoves, hearths, radiant heaters) and sources of increased air humidity (e.g. saunas, bathrooms, pool). An unstable or soft underlay underneath the scale may negatively affect weighing accuracy.
- Do not submerge the scale in water or rinse it under running water.
- When not using the scale for an extended period of time, remove the batteries. Keep the batteries out of children's reach as they may present a hazard to a child. In the event that a child swallows a battery, immediately seek medical help.

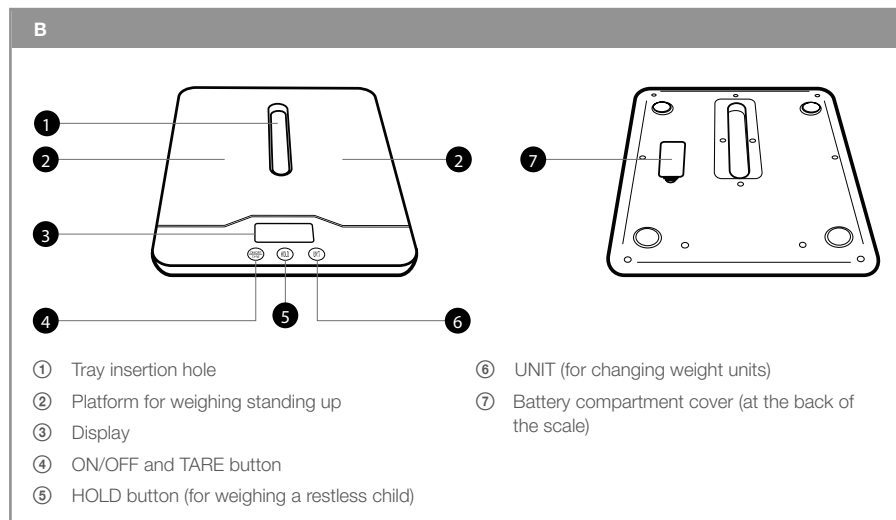
- Do not attempt to short circuit or break the battery or throw it into a fire. Do not subject the battery to direct sunlight, fire, etc.
- Do not make any alterations to the scale that would change its electrical or mechanical properties.
- Do not use the scale if it is in any way damaged.
- Do not attempt to repair the scale yourself. Have all repairs performed at an authorised service centre. By tampering with the product you risk voiding your legal rights arising from unsatisfactory performance or quality warranty.
- We recommend saving the original box, packaging material, receipt and responsibility statement of the vendor or warranty card for the duration of the warranty. It is appropriate to transport the scale in its original box.

Included contents

- Carefully unpack the scale and take care not to throw away any part of the packaging before you find all its parts.



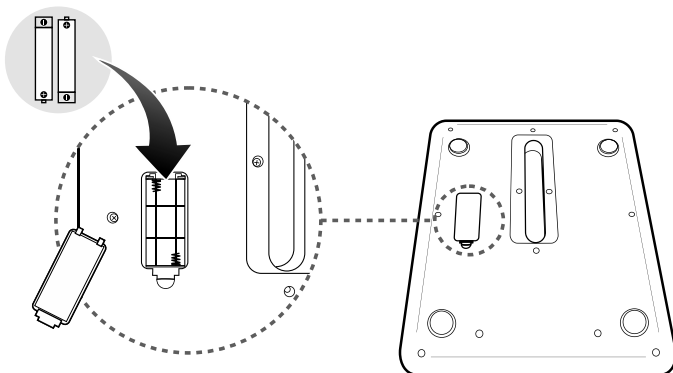
Description of the scale



Battery Installation

- It is necessary to insert two standard disposable or rechargeable type-AAA 1.5 V batteries. The batteries are not included.
- The battery compartment is located at the back of the scale. Remove the cover **B7** and insert the batteries into the compartment. When inserting the batteries, make sure that you maintain the correct polarity, which is marked inside the battery compartment. Then put the the battery cover back on.

**2x 1,5 V
AAA**



Low battery voltage indicator

- In the event that this scale cannot be turned on or the display shows 'Lo', it means that the batteries are almost flat and need to be replaced.

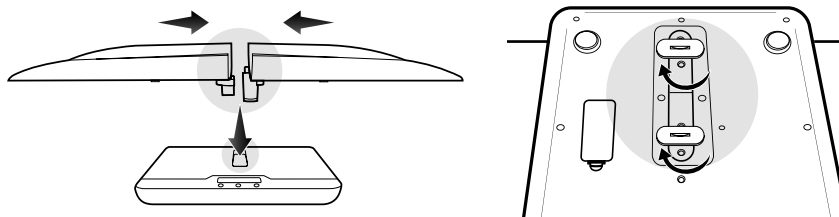
Assembling and attaching the tray

- Before weighing with the tray, assemble the tray and attach it to the scale. Simply join both parts of the tray **A3** and **A4** together and insert them into hole **B1** in the scale.
- Turn the assembled tray upside down and secure it against being tipped over and sliding out of the hole **B1** by turning the locking plates on the underside of the tray. The plates can be turned using fingers or insert a coin into the groove in the plate and then turn it 90°.



Warning:

The tray must be secured in place before every weighing session, otherwise there is a risk of the tray tipping over together with your child and seriously injuring it.



**Tip:**

If the tray was stored in a cold location, we recommend to first allow it come to room temperature and only then to weigh an undressed child.

Weighing

Turning on the scale

- Place the scale on a firm and level surface. To turn on the scale, press button **B4**. After several seconds, the display will show '0.00' and the selected weight unit. This scale is ready for weighing.

Changing weight units

- If you wish to change the weight units, repeatedly press button B6. The display will toggle between the available units: kg, oz and lb.

Weighing with the tray

**Tip:**

If you wish to achieve reliable and comparable results, always weigh the child at the same time of day, e.g. in the morning. Place the child into the middle of the tray, ideally undressed. Excessive clothing may increase the weight, as may food and drink consumed prior to weighing.

- Once '0.00' kg is shown on the display, carefully place the child on the tray. Be very careful, do not allow the child to fall and be careful with its head. However, do not touch the child as this could affect the measured weight.

**Attention:**

Never leave a child on the tray without supervision, and after weighing it, always put the child in a safe place, e.g. in a cot or pram.

- If the child is calm when on the tray, you can also measure its length. There is a two-way measuring scale on the tray - 0 to 60 cm. Gently stretch out the child's legs so that the heels are aligned with the number 0 and read off its total length.

Weighing without the tray

- Larger children that are already able to stand on their own can also be weighed without the tray. Stand the child barefoot on the platform **B2** and read the value off the display. The weight of the child must not exceed 40 kg.

**Attention:**

Do not allow a child with wet feet to stand on the scale or if the platform **B2** is wet. The child could slip and injure itself. Do not permit the child to jump on the platform since there is a risk of the child slipping, tipping over the scale and injuring itself.

Weighing with the subtractive TARE function

- If you wish to weigh the child wrapped in a textile, e.g. baby blanket, towel or carry bag), first place the textile on to the tray. Its weight will be shown.
- Press button **B4**. The scale will store the weight of the textile to memory and the display will be reset to zero. As soon as the textile is removed, its weight will be shown with the minus (-) sign.
- Wrap the child in the textile and carefully place it on the tray. The subtractive TARE function will automatically subtract the saved weight of the textile and show the correct weight of the child.

Weighing with the HOLD function

- If the child is very restless and the weight value on the display is constantly changing, press button **B5** during while weighing it. The HOLD function will enable the final weight to be blocked on the display.
- You can unblock the blocked value by pressing button **B5** or reset it by pressing button **B4**.

Turning off the scale

- The scale will automatically turn off after 60 seconds of inactivity. If you wish to turn it off sooner, hold down button **B4** for a few moments. When the display turns off, the scale is off.

Error messages

- The following error messages are shown on the display:
 - Lo** – Low battery power voltage. Replace the batteries.
 - Err** – Scale is overloaded. The weight of the child is more than 40 kg.

Cleaning and maintenance

**Attention:**

For cleaning, do not use abrasive cleaning products, solvents, thinners, etc. Never submerge the scale in water or rinse under running water.

- You can clean the scale using a dampened cloth on to which you may apply a small amount of washing detergent. After cleaning it, wipe the scale thoroughly dry.
- The tray can be cleaned both using a dampened cloth or under running water. After washing the tray, dry it thoroughly.

Storage

- Store the scale and tray in a clean dry location. Do not place any heavy items on to the scale.
- When not using the scale for an extended period of time, remove the batteries.

Technical specifications

Model number	BSB 4050
Power source	2× 1.5V type-AAA batteries
Maximum child weight of	40 kg
Weight units.....	kg / oz / lb

Disposal of used batteries

Do not dispose of old batteries with regular household waste. Dispose of batteries at designated battery disposal points.

Instructions and information about the handling of used packaging

Dispose of used packaging material at a site designated for waste in your municipality.

The Czech language is the original version of the user's manual.

Explanation of symbols used on the product, its accessories and packaging



This appliance meets all the basic requirements of EU directives related to it.



This symbol on products or original documents means that used electric or electronic products must not be added to ordinary municipal waste. For proper disposal, renewal and recycling hand over these appliances to determined collection points. Alternatively, in some European Union states or other European countries you may return your appliances to the local retailer when buying an equivalent new appliance. Correct disposal of this product helps save valuable natural resources and prevents potential negative effects on the environment and human health, which could result from improper waste disposal. Ask your local authorities or collection facility for more details. In accordance with national regulations penalties may be imposed for the incorrect disposal of this type of waste.

For business entities in European Union states

If you want to dispose of electric or electronic appliances, ask your retailer or supplier for the necessary information.

Disposal in other countries outside the European Union.

This symbol is valid in the European Union. If you wish to dispose of this product, request the necessary information about the correct disposal method from the local council or from your retailer.



This symbol on products means that during its manufacture the directive of the European Parliament and Council for the reduction of hazardous substances in electrical and electronic products was complied with and that this product does not contain dangerous substances.

Changes to text and technical parameters are reserved.